



2255



The Performance... of Power

Brochure September 2018
ENGLISH

Summary

KJ: the revolutionary solution.....	6
Smart solutions for the KJ to make the difference	10
7 solutions to get anywhere.....	12
Tailor-made fly-jibs to maximize lenght and capacity in any operating conditions	14
Outstanding performance in any position.....	18
Getting anywhere with the man basket	22
The 2 Effer options for the rear stabilizers	24
Maximum comfort with automatic rotating stabilizers....	26
The details that count.....	28
ICON: the look of the future.....	32
All the advantages of Progress 2.0.....	34
Performance	40
Dimensions.....	47
Standard & Optional.....	48

**The
Performance...
of Power**

For over 50 years, we've been
designing big knuckleboom cranes
to help your business succeed.



EFFER 2255



EFFER 2255

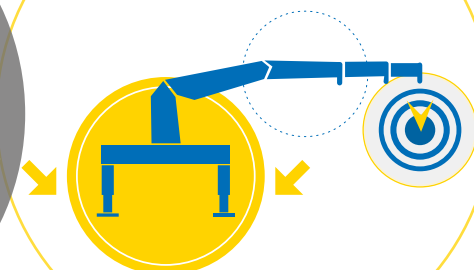
This time we've raised the bar:
we created the new 8S crane
with 10 extensions!



KJ:
the
revolutionary
solution

When you need it,
you can get more reach
with the KJ,
our new hydraulic equipment
designed to improve
the flexibility of the crane.
With two additional extensions,
the KJ combines
the lifting performance
of the crane with greater
articulation height.

NO LIMITS



Maximum flexibility

You can leave the KJ installed on the crane, completely
stowed inside the second boom, and with the jib
mounted.

Everything is ready to use.

All of the electronic and hydraulic
systems are designed to
ensure maximum
performance, both with
and without the KJ,
always optimizing the
crane's capacity.



Uniqueness means business

35m! 2 floors more going up&over with KJ

The KJ is a great advantage when operating at great heights: it is a very flexible solution which allows you to carry out jobs that otherwise you could not do. In fact, you can climb over 2 floors more than the base version of the crane.

Combined with the jib, the KJ allows you to reach an articulation height of 35 metres: the new record for the articulated cranes.



Maximum lateral stiffness

The 2255 is equipped with **lateral heeling control sensors** to ensure the maximum straightness, which is extremely important especially during the vertical work. Since this crane is able to reach outstanding heights, the **booms decagonal structure** is designed to keep the maximum stiffness.

Smart solutions for the KJ to make the difference

A dedicated support for the KJ

As a standard supply, you have a specific support for the KJ where to place it when you don't use it. **This support makes its mounting and dismounting very easy so you can use the KJ when you really need it.**



Quickfaster: the connection made easy

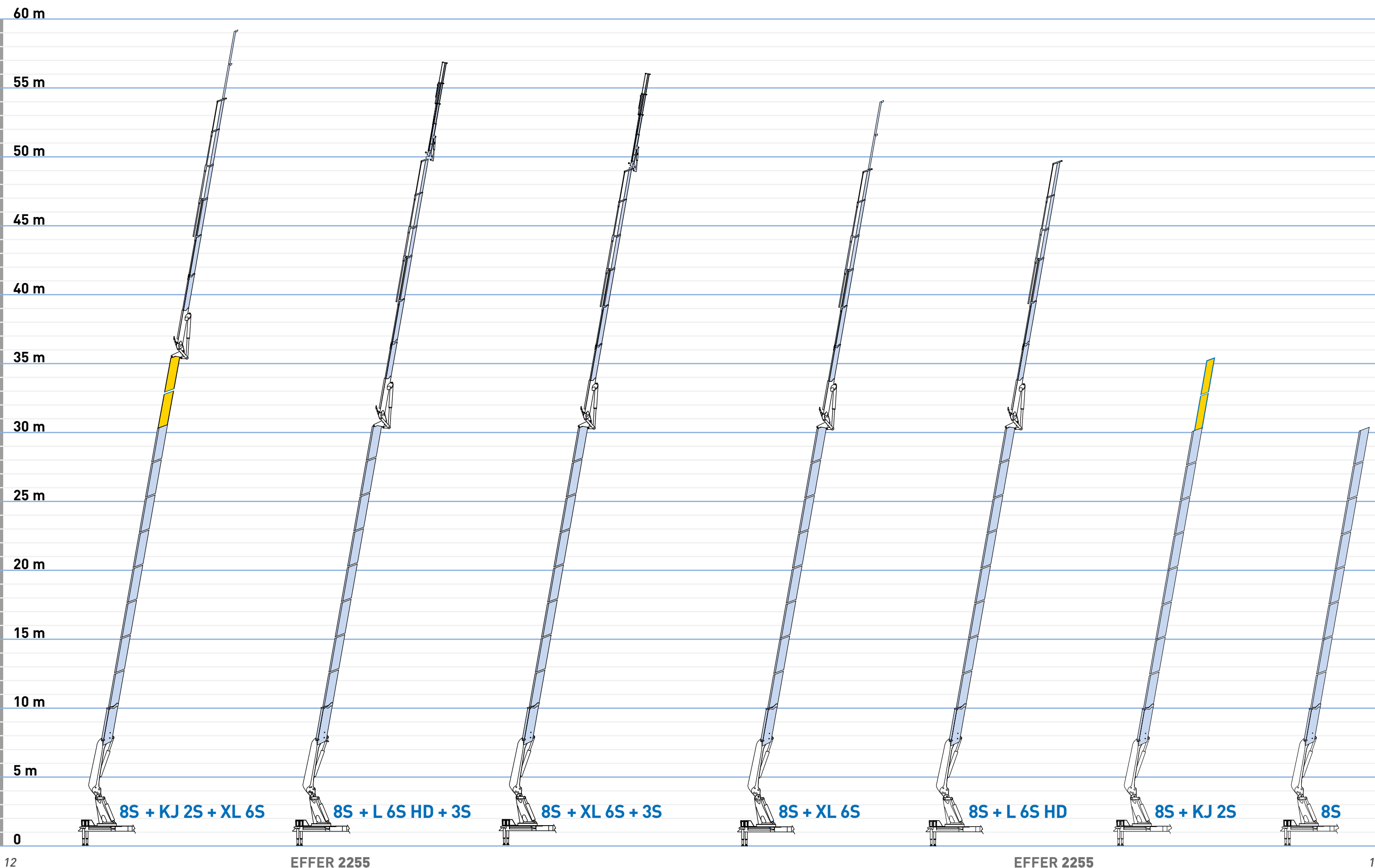
Thanks to the Effer Quickfaster you can connect everything with just one movement.



7 solutions to get anywhere

Go from the 8S base crane to the 10S with the KJ!

The 2255 can satisfy all requirements. In fact, thanks to the combination of all equipment available, you can have 7 different configurations.



Tailor-made fly-jibs to maximize length and capacity in any operating conditions

Tell us what's your job and we'll tell you which is the right fly-jib for you

You can choose among 2 fly-jibs in accordance with the kind of job you have to carry out. And now you can lift even further! These 2 fly-jibs reach a **vertical height of 48 metres** and **52 metres** in the configuration 8S + KJ 2S + XL 6S.



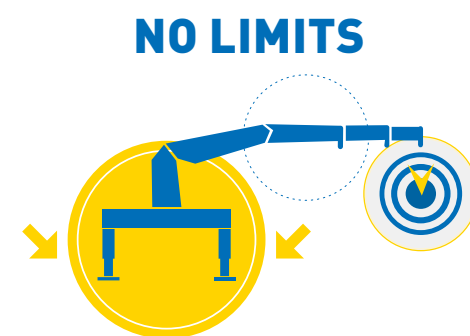
Take full advantage of your 2255: JIB and 2nd JIB work together



Simultaneous
movements =
speed & versatility

Articulation at 49 m!

The 2nd JIB is an option which allows you to work at outstanding heights, shifting the articulation point to 49 metres. The 2nd JIB has CE certification in accordance with the current regulations. In addition, you have the ability to move the 2nd JIB with a remote control **to make all maneuvers simultaneous.**



Effer provides
CE certification to
work with 2 JIBS



Outstanding performance in any position

To meet the needs of the most demanding operators, the jib XL has been conceived to **maintain unique performance both in horizontal and vertical position.**



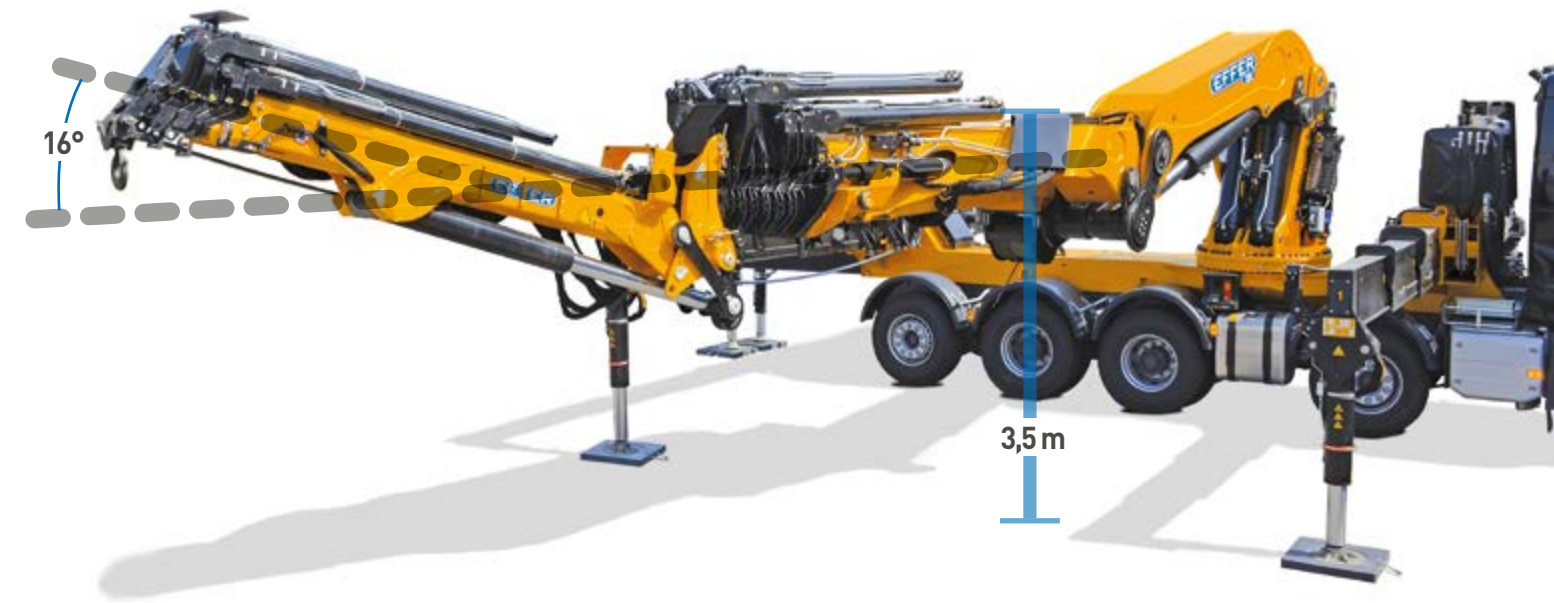
Outstanding performance in any position

You can always count on exceptional lifting capacity,
no matter the geometry of the crane.

In case you need to work inside buildings, the 2255 allows
you to operate with a minimum height of the second boom of
just **3,5 metres** from the ground.



EFFER 2255



EFFER 2255

Getting anywhere with the man basket

Now
you can go
beyond

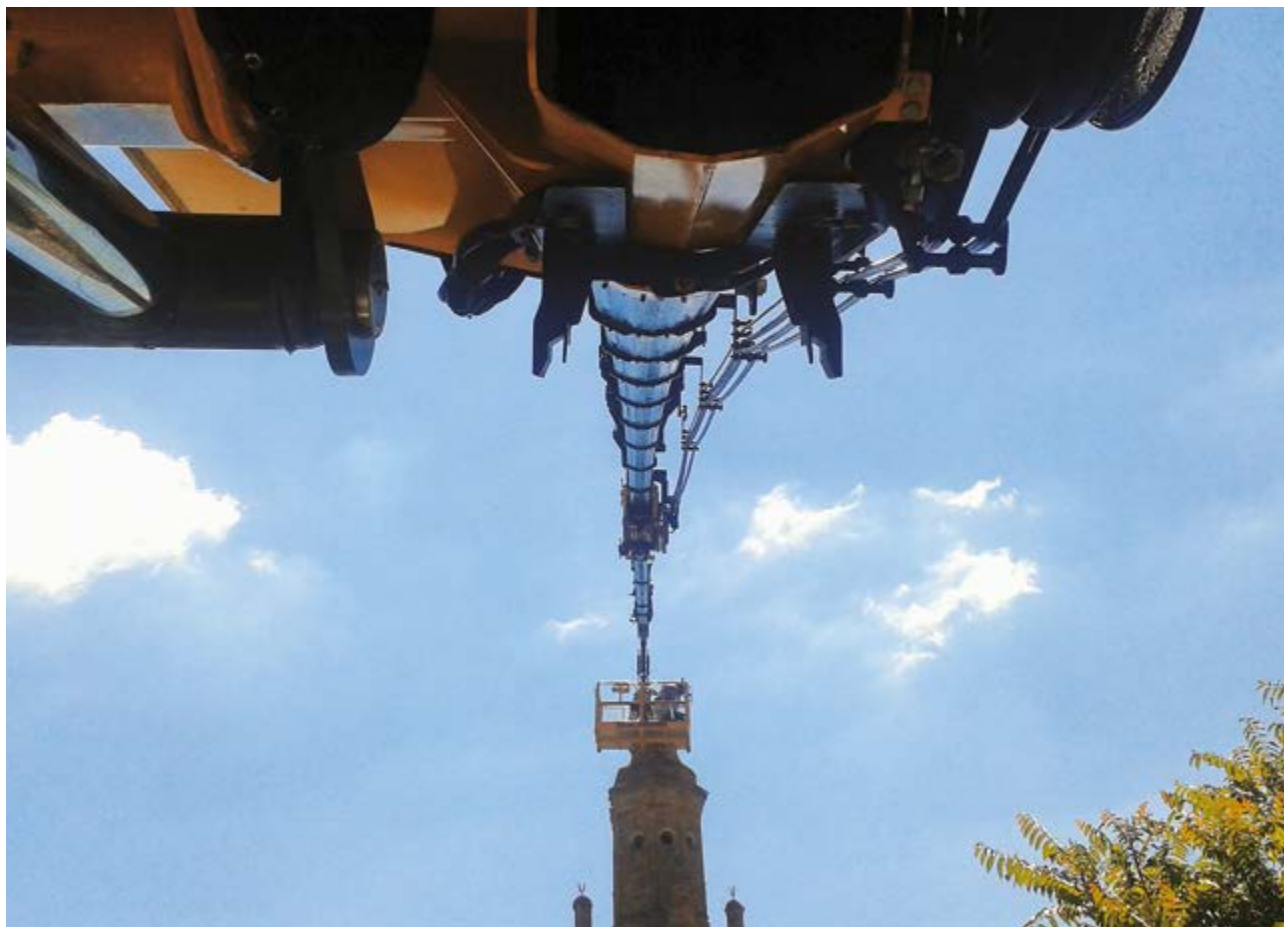
Performance level D
for electrical systems.

Possibility to work with stabilizers
partially extended.

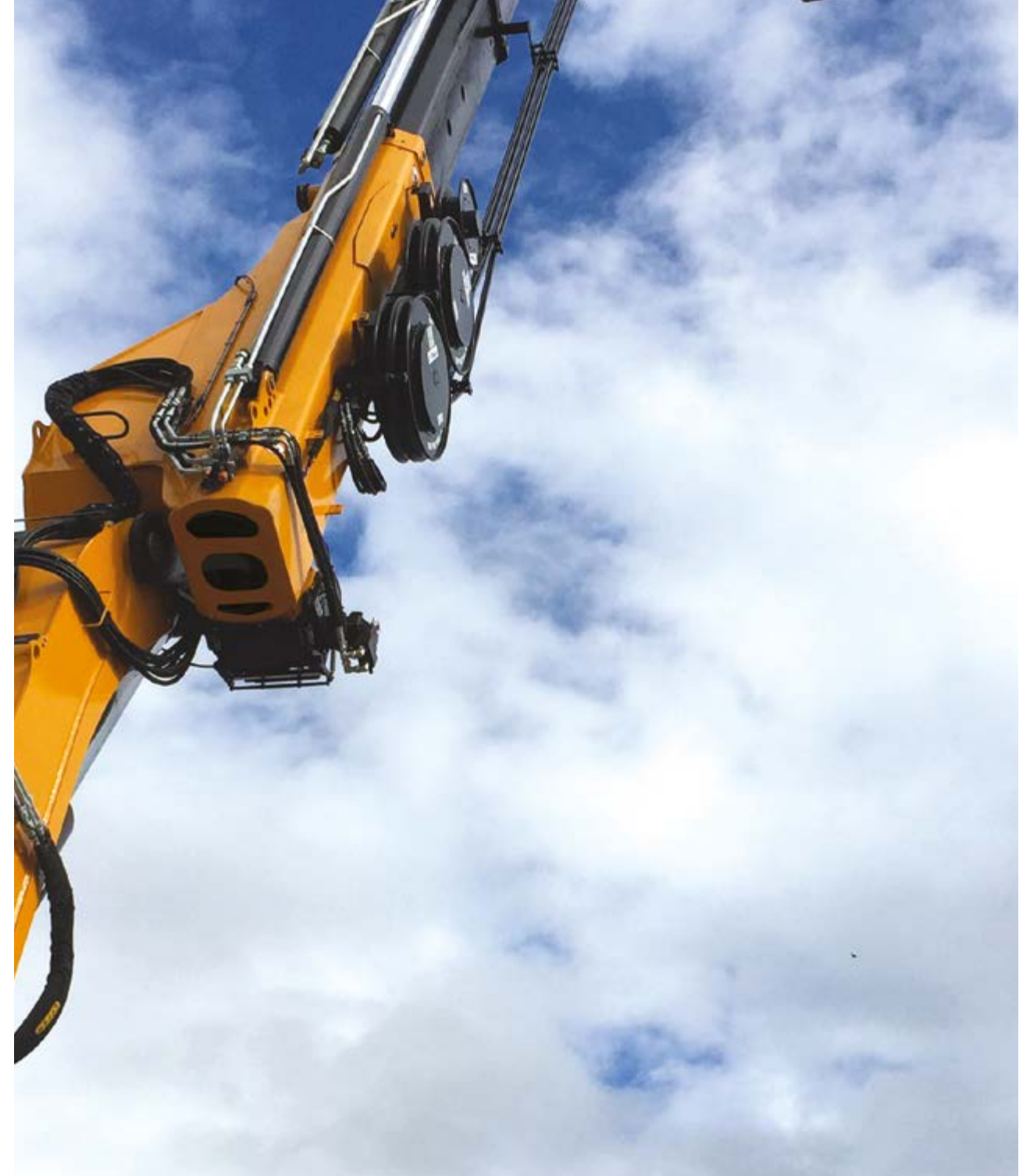
Authorization for the fitting
of the basket to crane.

EASY

WORK



EFFER 2255



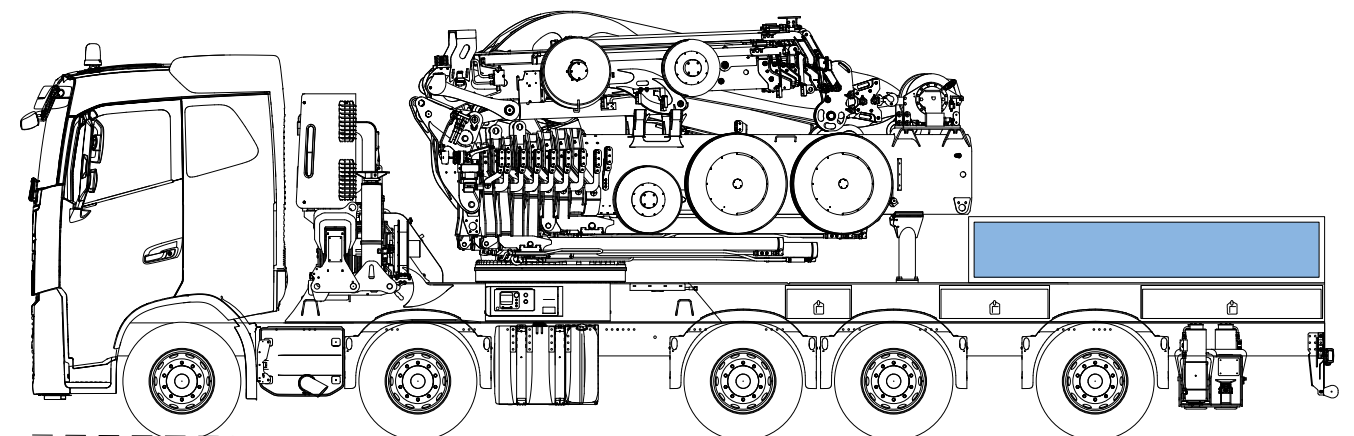
EFFER 2255

The 2 Effer options for the rear stabilizers



Optimized stability everywhere

Of the many features of the 2255 which make the difference, the stabilization system is one of the most important. The chassis stiffness ensures a rigid and stable vehicle. **The base is specifically designed to be compact and to fit all 4 and 5 axles chassis.**



More possibilities: stabilizers under the chassis

Thanks to this enhancement, it is possible to **install a truck body** to carry anything you may need for your job.

Maximum comfort with automatic rotating stabilizers



Compact installation

Ergonomic controls and ease of use are strong features of the 2255. The rotation system of the foot cylinder on all stabilizers (including the extra rear stabilizers), **avoids any interference with the different components of the truck and ensures a compact installation.**

TIME TO MONEY



The details that count

All the jibs power supply systems are mounted on the second boom, making the 2255 the ideal solution for smooth operation.



Hose Reels

The hose reels are available for both JIB controls, and as an option for the **independent controls** of the 2nd JIB. Hose reels are ideal for those who need maximum compactness.



Hose support system

Effer offers a mechanical hose support system as well that ensures the maximum robustness.

The details that count



Bronze pads on the stabilizers

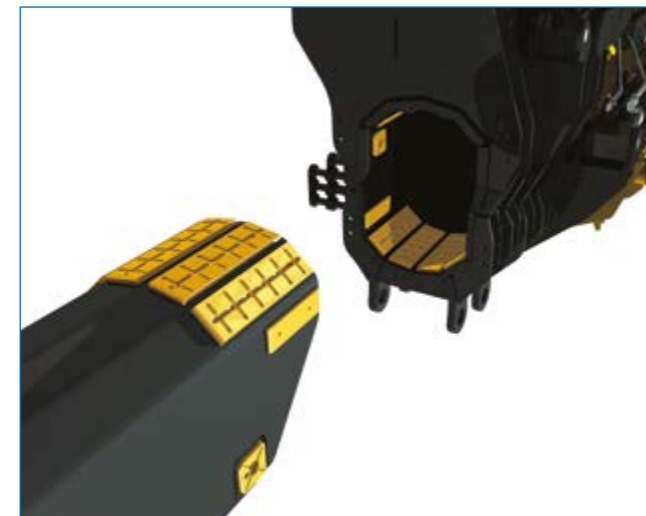
To ensure maximum stability and stiffness, Effer created pads made of bronze to reduce mechanical clearance. These are a standard feature of the boom extensions and they are mounted on the stabilizers of the new 2255 to minimize side movements.

LONG LASTING



Maximum flexibility of use

Multiple attachment points allow operators to attach lifting accessories, such as hooks, on the crane boom and on the jibs. This allows for more options to attach the load so you can adapt to its dimensions.



Efficient lubrication

Our new greasing system and use of bronze ensures the maximum resistance to wear and tear and the maximum efficiency during the lubrication of components.



ICON

The look of the future



Design and functionality

All of the crane controls are inside the cover on the column, making manual maneuvers easier for the operator.

An attractive design to protect the components

The stabilizers controls are in a protected position while staying easily accessible. A resistant metal cover protects and hides these components.



Under a different light

The entire panel of PROGRESS 2.0, the new electronic control system, is always lit for maximum visibility under all working conditions, offering maximum ease of use. There is also a column for visual alerts.



All the advantages of **PROGRESS** 2.0



Steady, the standard remote control for the 2255

Steady is designed to have **everything under control and to work better**. Much lighter than other remote controls in the same category, it allows you to operate in low light conditions and ensures the maximum comfort during all the work day. Conceived and designed on the basis of tens of expert crane operators, Steady means **maximum ergonomics, precision and user friendliness**.

Manage everything from your remote control

The automatic rotation option allows you to move the support cylinders using only the remote control. The movements of the stabilizers are automatic and all in sequence. **This eliminates any manual operation, enhancing the safety of the unit.**



DLC Dynamic Load Chart

Before to start working, you can see on the remote control display the real loading capacity according to how you stabilized the crane. In fact, the DLC calculates the crane performance on 360° operative radius and for each extension of the crane. **You can immediately know how many kilograms you can actually lift in a specific direction** and predict the crane potentiality in the neighboring areas. This feature of Progress 2.0 facilitates the operator work even in the most complex operating situations with a saving of time and major safety.



RACE

Remote Assistance Control Effer



More connected, more efficient

From now on, the monitoring and planning of your work in every moment will be even easier, also for Effer cranes fleets. And in case of need, the remote support is immediate. RACE is the **new connectivity system for Effer cranes**, developed thanks to **Progress 2.0** electronics, that allows you to **always stay connected to your crane** and to monitor your work.

Immediate support

Whenever you need support, wherever you are, **your Effer Service Point** can connect directly to your crane via remote access and **quickly intervene** to fix any errors. An important saving of time and money.

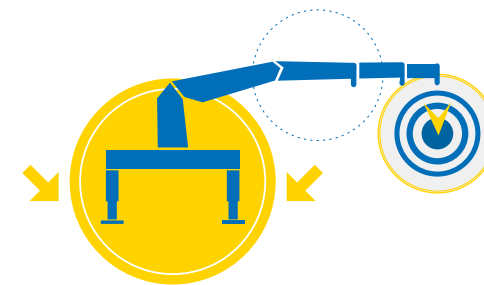




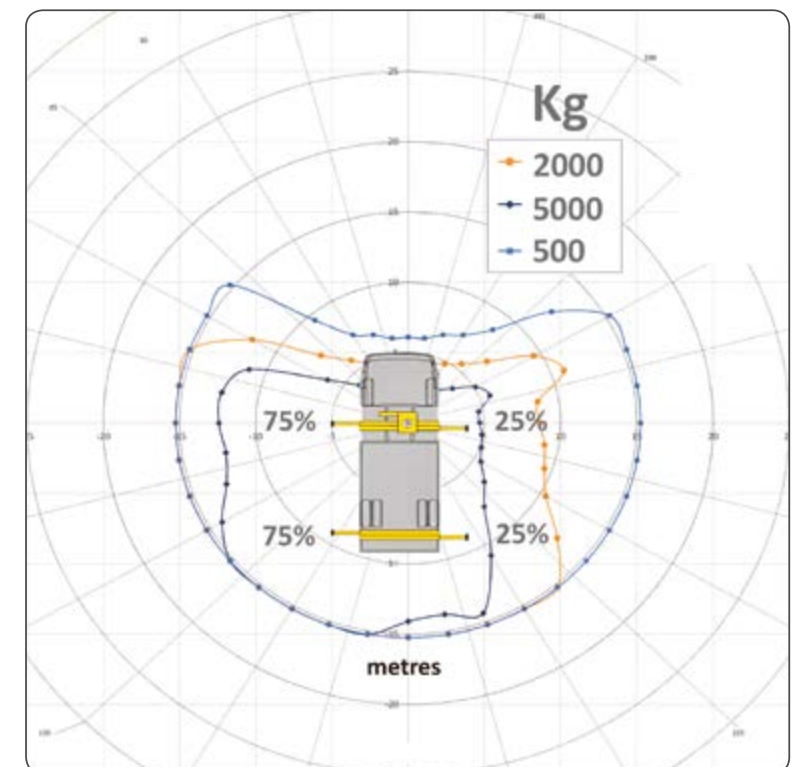
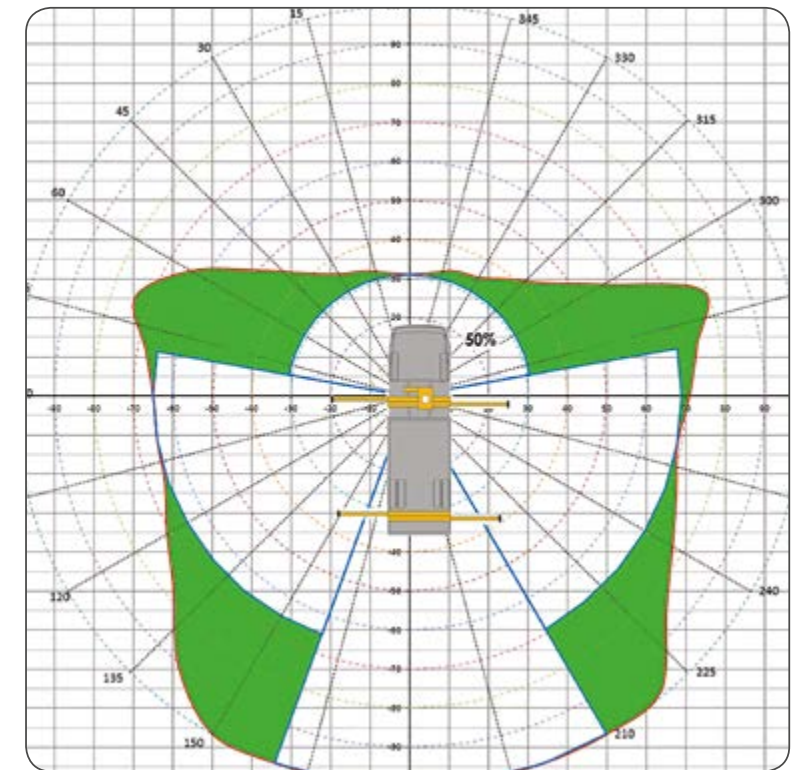
The maximum performance, always

Effer developed this solution to **increase in real time the performance of the crane in a safe way**. Thanks to Sense, the electronic management system Progress 2.0 calculates **the stability in each point of the operative area in accordance with the actual extension of the stabilizers and maximizes the load capacity everywhere**, also with ballast. The operator can consult **customized load diagrams** in order to exactly know the performance of his own crane in any working condition.

NO LIMITS

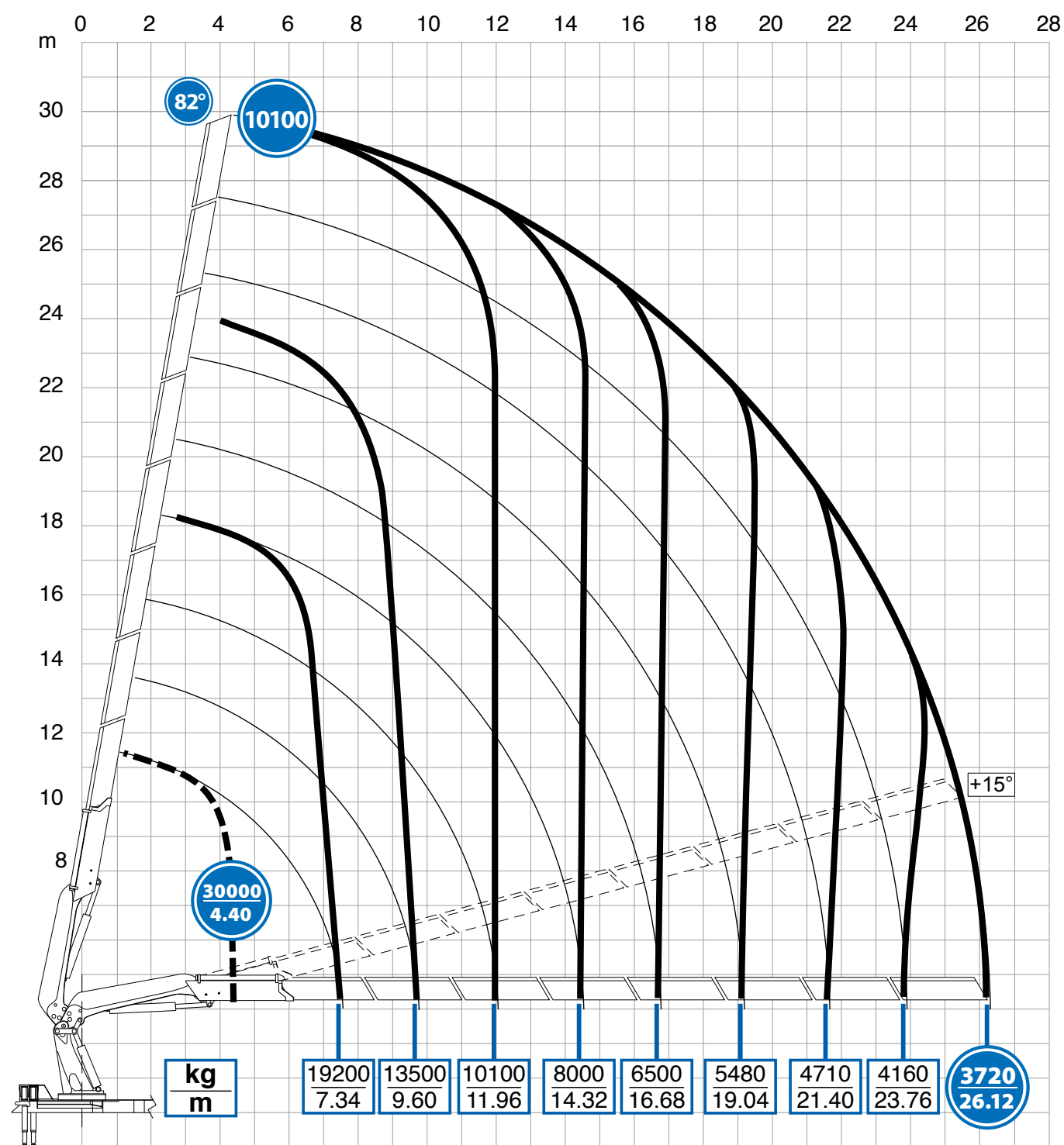


EASY WORK

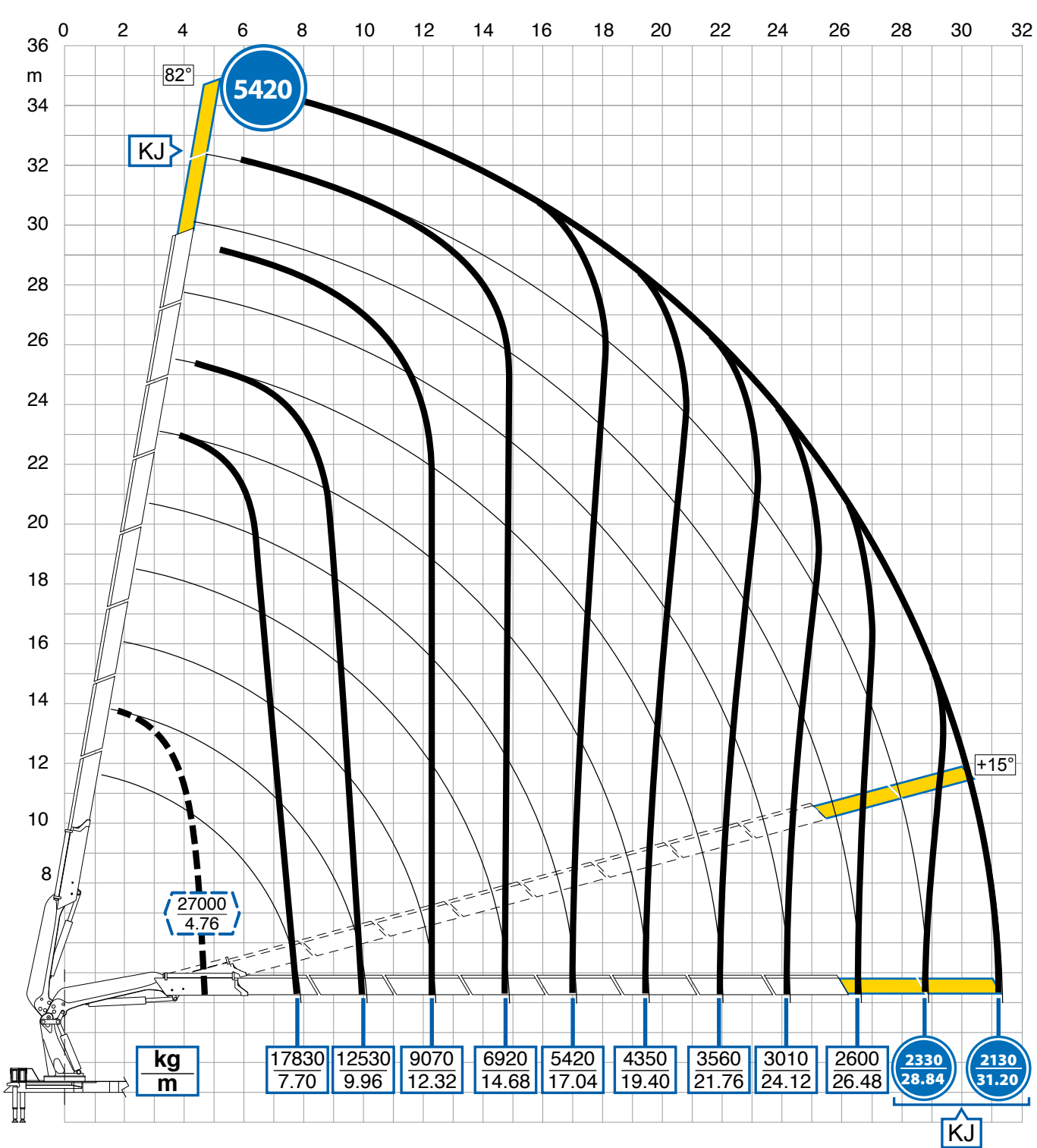


Performance

8S

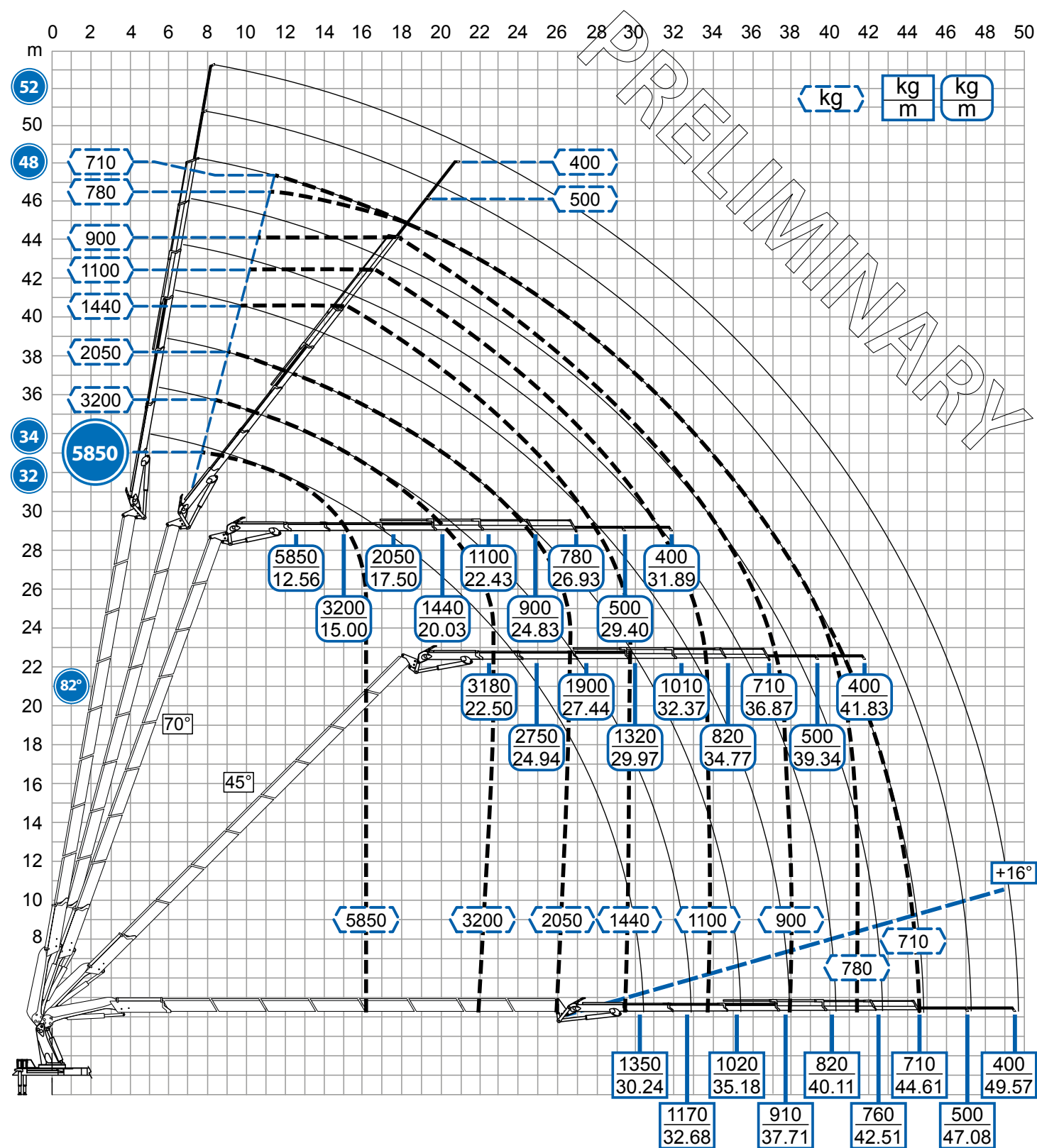


8S + KJ 2S

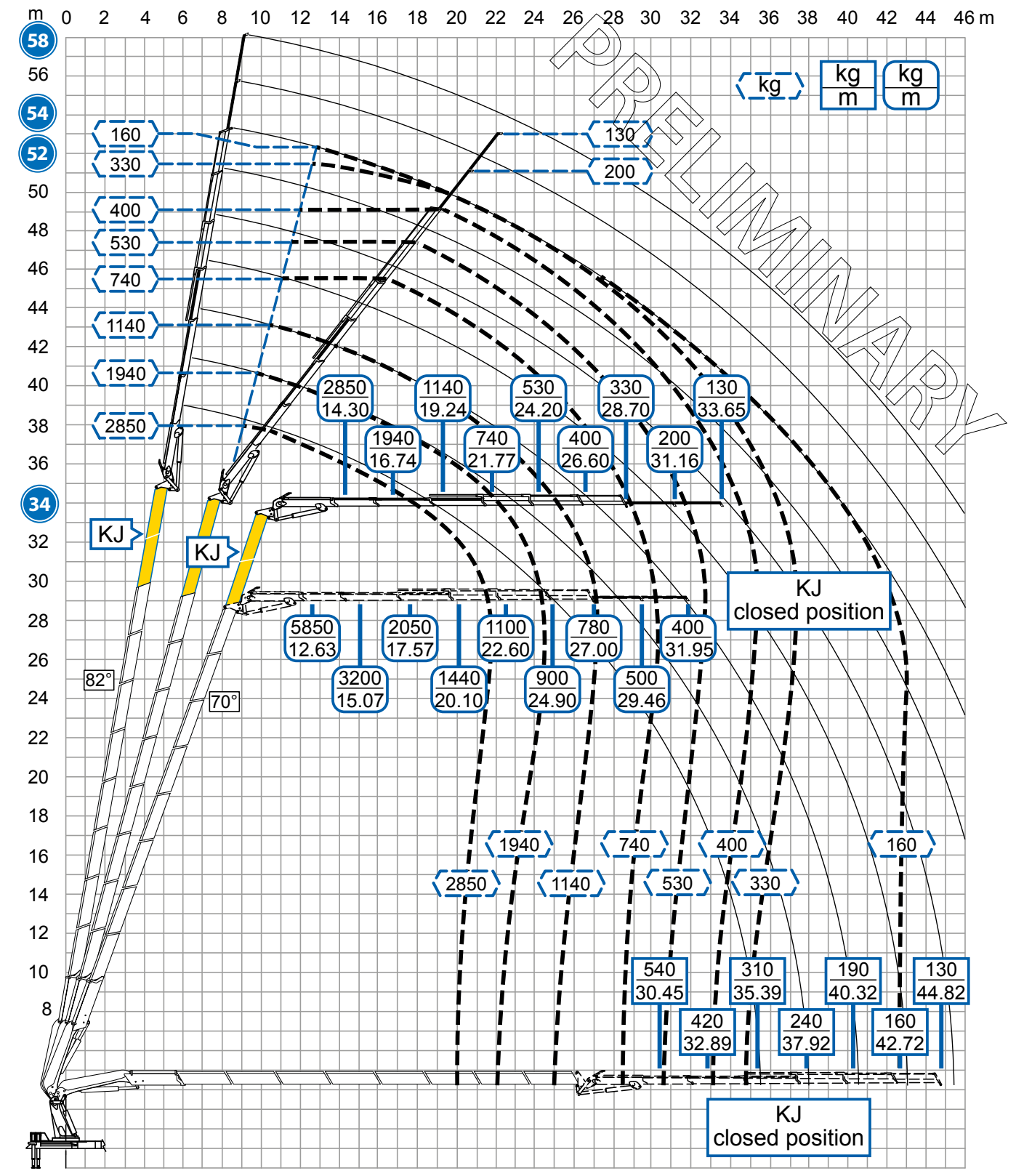


Performance

8S + XL 6S

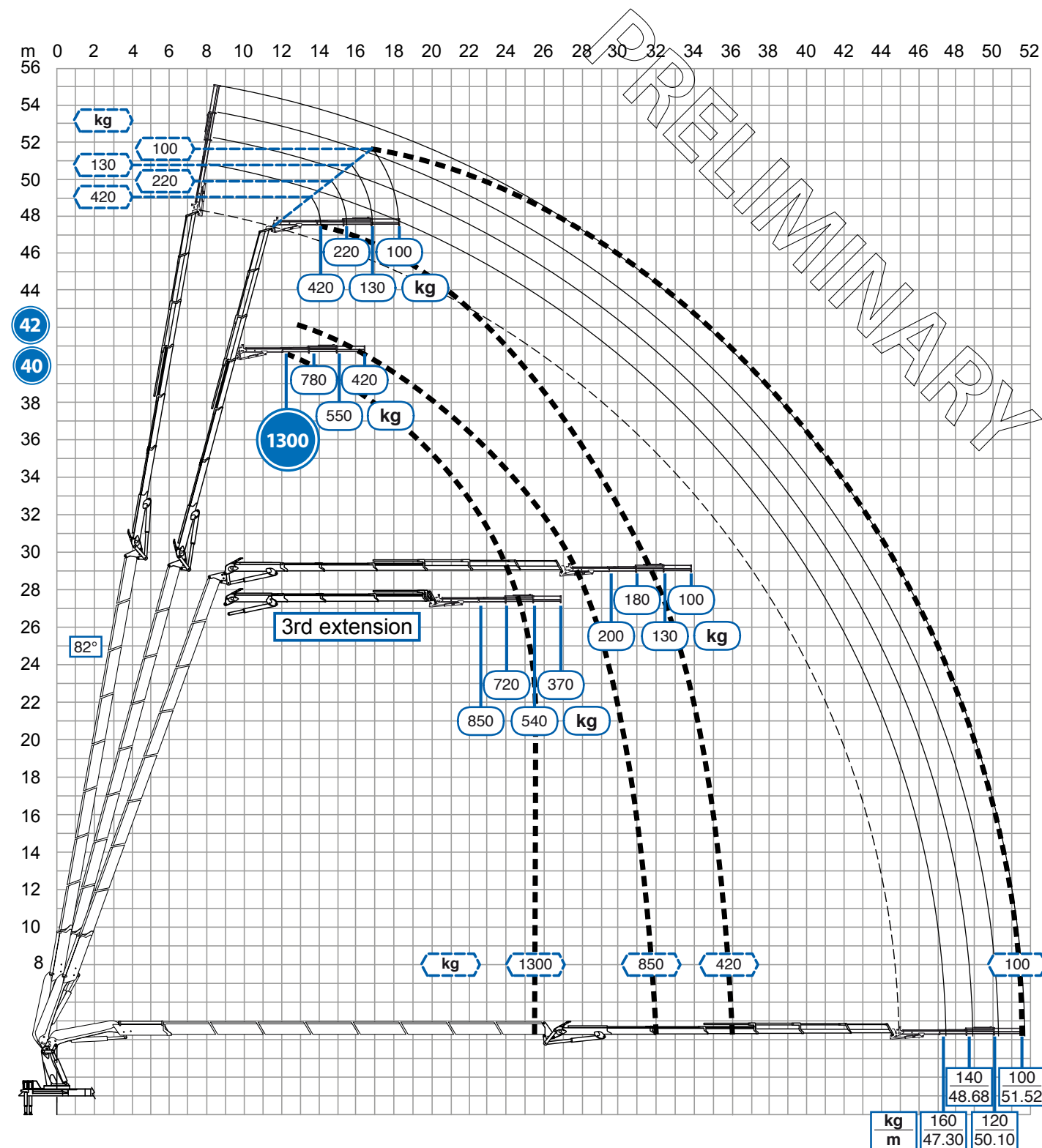


8S + KJ 2S + XL 6S

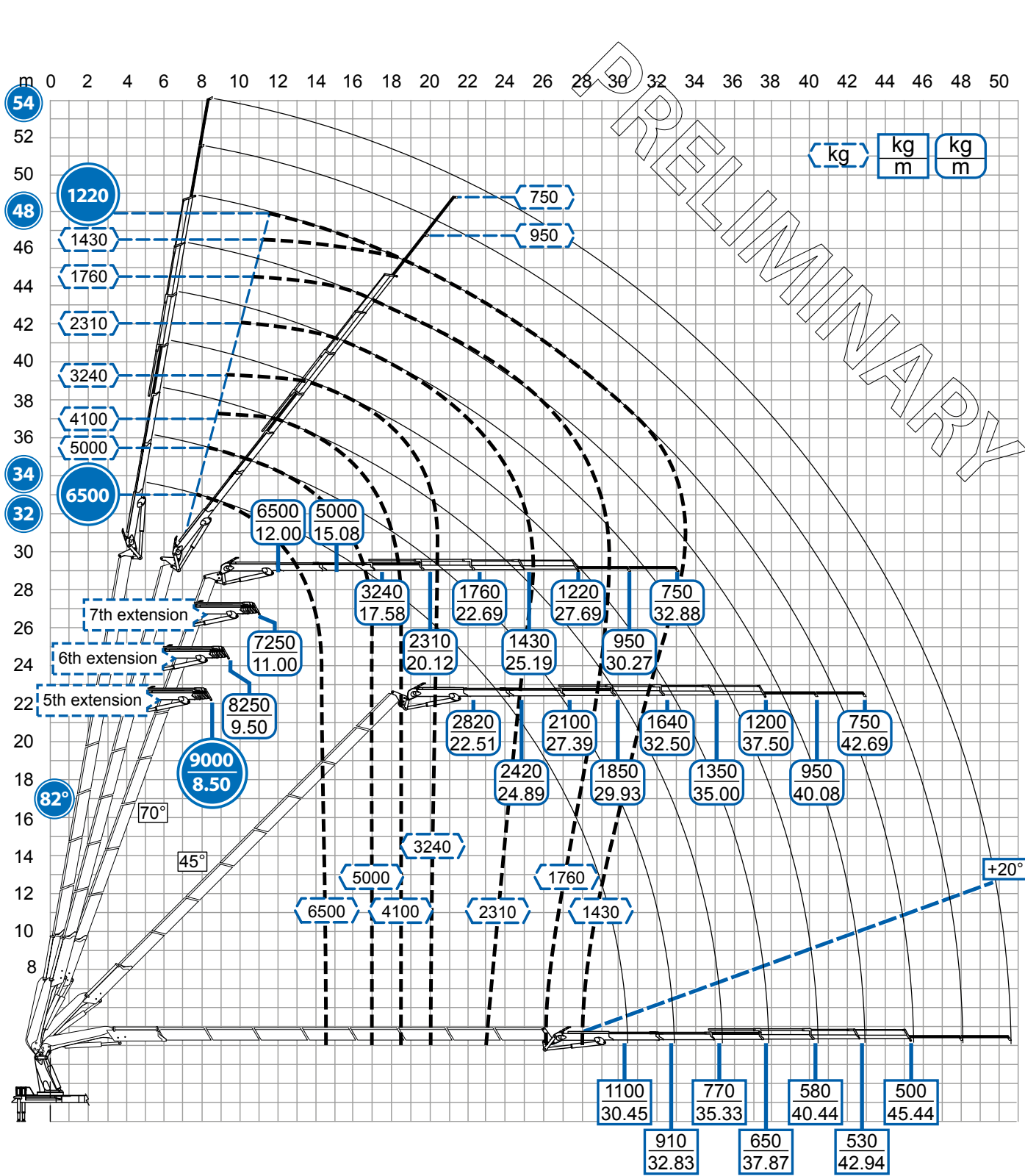


Performance

8S + XL 6S + 3S

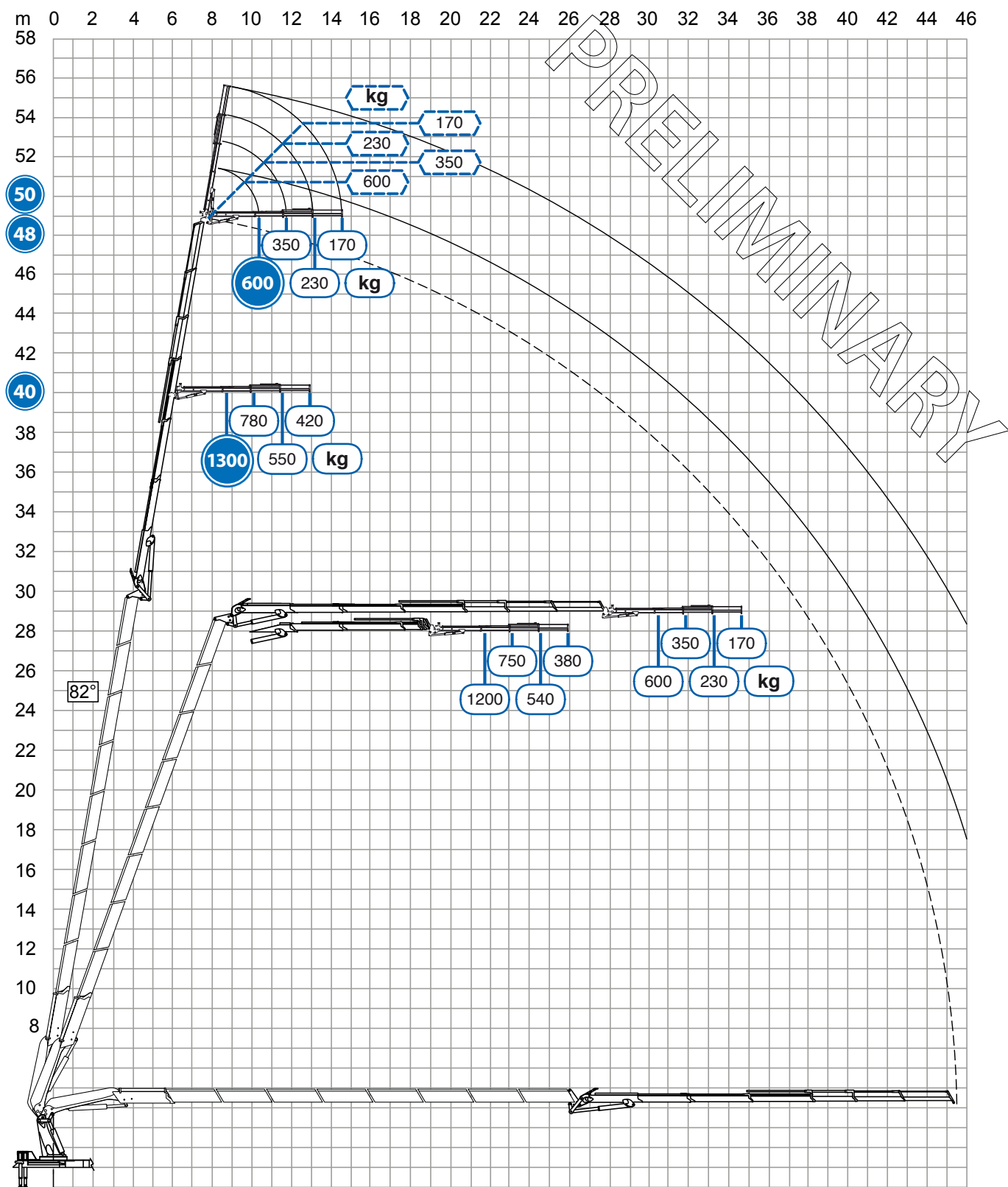


8S + L 6S Heavy Duty

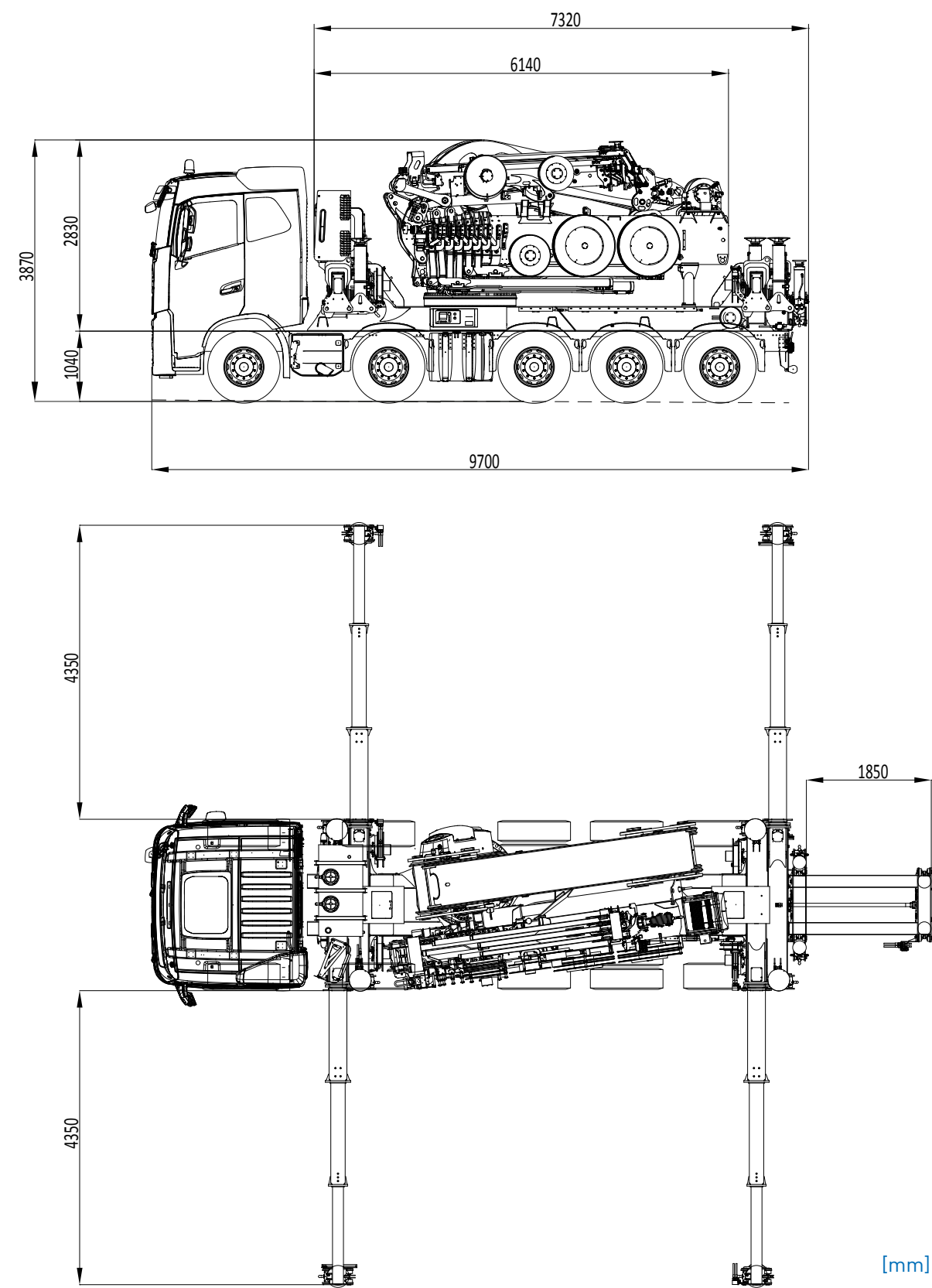


Performance

8S + L 6S Heavy Duty + 3S



Dimensions







G5K C'A#G

-bXi ghf]a Uf_Yb %| -)' \$GrQ f]b[
 Tel. +() +\$%\$ \$+**` | gU[4 gUk c"X_
[www.gUk c"X_](http://www.gUk c)

