

# Hiab Jonsered cut-to-length and tree-length cranes



Product brochure

# Hiab Jonsered are made to withstand even the roughest use!

For four decades, Hiab Jonsered has been a pioneer in the field of timber handling solutions for both vehicles and fixed installations. Its crane designs have been honed to a high level of functionality and reliability in practical work.

With Hiab Jonsered cranes, work is efficient whether loading is occasional or continuous hard work. It is precisely in demanding timber handling that Hiab Jonsered demonstrates its superiority. Its ergonomic control position provides excellent visibility over the work area, and its smooth, accurate controls make work effortless. Even the largest of loads are quickly and efficiently loaded.

## Hiab Jonsered cut-to-length cranes

Hiab Jonsered cut-to-length cranes are designed for handling

cut-to-length timber. The model range includes both cranes with a straight boom and Z cranes which fold down to compact size. Since all cranes are manufactured from the best materials using modern methods, they withstand even the roughest use.

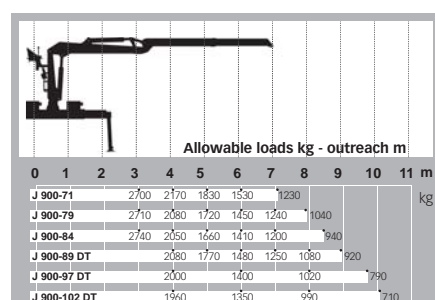
## Global service network

For crane maintenance, Jonsered has a global service network with expert mechanics who know the cranes like the backs of their hands. An extensive selection of accessories is available for Hiab Jonsered cranes, from grapples to cabins.

## J900S



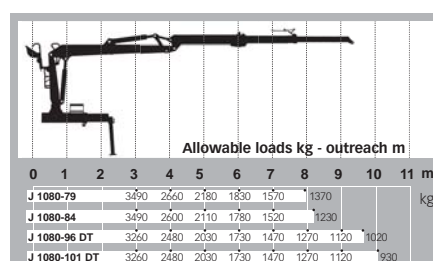
The design of the **J900S** crane is based on solutions proven and tested in extreme operating conditions. Light, yet dependable and strong, with a top quality capacity/weight ratio. With options of two column heights, several alternative outreaches and also extra wide stabilizers. The crane also comes with the proven robust and reliable slewing gear.



## J1080S



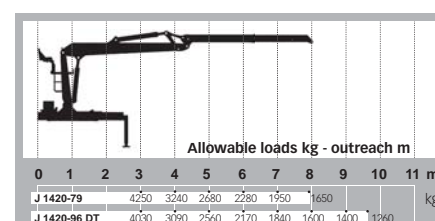
The efficient **J1080S** equipped with a powerful double slewing system has been designed for those who do abundant loading of timber. In the crane construction, easiness of maintenance has been paid great attention to, and the new ergonomic control position makes the loading work more comfortable than ever. The crane can be equipped with manual control or digital electric control system.



## J1420S



The **J1420S** is the heavyweight of cut-to-length timber cranes, loading timber reliably, efficiently and effortlessly. J1420S is equipped with a separate stabiliser leg framework, increasing installation options and enabling the use of wider stabiliser legs when necessary.





# CUT-TO-LENGTH CRANES

## J1140Z



The **J1140Z**, folding into a compact space, is a powerful and durable crane that does not take up valuable cargo space at the expense of timber. Despite its compact size, it features an excellent performance capacity. Typically for Hiab Jonsered cranes, the J1140Z has superlative control properties and an ergonomic control position.

Allowable loads kg - outreach m											
0	1	2	3	4	5	6	7	8	9	10	11
J 1140 Z-80	3270	2540	2120	1830	1550	1470					
J 1140 Z-93 DT	3080	2380	1970	1700	1460	1260	980				

## J1320Z



The **J1320Z** is a high-performance, light crane for continuous loading. The crane folds down into a transport position and has a separate auxiliary cylinder, which enables high performance at close range. Its hydraulic hoses are installed inside the booms, further increasing the reliability of this durable crane.

Allowable loads kg - outreach m											
0	1	2	3	4	5	6	7	8	9	10	11 m
J 1320 Z-79	3670	2980	2550	2200	1880	1470					
J 1320 Z-94 DT		2700	2320	2080	1850	1550	1060				kg

## J1440Z



The **J1440Z**, folding into a compact space, is a crane more powerful than its size class, effortlessly loading even the heaviest timber. Its advanced Z design features high performance, guaranteed by its powerful double-slewing system and the Power Link, which improves close-range lifting capacity.

Allowable loads kg - outreach m											
0	1	2	3	4	5	6	7	8	9	10	11 m
J 1440 Z-80	3940	3080	2560	2220	1900	1740					kg
J 1440 Z-95 DT	3720	2880	2400	2060	1760	1520	1200				

## J1620Z



The **J1620Z** is a crane proven in the field in rugged use, enduring continuous, hard work. Designed mainly for loading cut-to-length timber, the J1620Z possesses enough lifting capacity to handle full-length stems. Its narrow boom assembly enables an unrestricted view from its ergonomic control position over the entire work area.

Allowable loads kg - outreach m											
0	1	2	3	4	5	6	7	8	9	10	11 m
J 1620 Z-80	3650	3200	2800	2400	2100						kg
J 1620 Z-93 DT	3400	2950	2600	2200	1850	1500					





## Hiab Jonsered tree-length crane - King of the Forest

Diamonds are formed in high pressure, extreme conditions. The same applies to Hiab Jonsered timber cranes, their design and solutions honed into cutting-edge functionality and power by hard work and demanding conditions.

Heavy tree-length logs require heavy-duty cranes. Excellent ergonomics, accurate controls and durable design combined with the speed of the hydraulics make the crane controls precise and easy to operate.



# TREE-LENGTH CRANES

## J1820S



The **J1820S** is an agile and precision guided rustler that can handle many use hours. Its build and capacity are somewhat lighter from its big brother - the J2490S - but in real action, the relation to Big Jon is evident. Good ergonomics and fast hydraulics are distinctive features of the Jonsered family.

Allowable loads kg - outreach m											
	0	1	2	3	4	5	6	7	8	9	10
J 1820-79					4800		2950		2300		
J 1820-91					3600			2350		1880	
J 1820-111					3050					1740	1300

## J2490S



### J2490S Big Jon – The Legend

The backbone of Jonsered's model range, the legendary J2490S Big Jon, is one of the most popular tree-length cranes, known to timber handling professionals throughout the world. Designed for hard work, Big Jon is famous for its durability. It will load and unload long after others have fallen by the wayside.

Allowable loads kg - outreach m													
	0	1	2	3	4	5	6	7	8	9	10	11	12
J 2490-79						5850		4000		3100			
J 2490-85						5850			3400	2800			
J 2490-91						4600			3100	2500			
J 2490-95 DT						6100			3500	2800	2350		
J 2490-97						6790	5430	4360	3670	3150	2750	2420	
J 2490-107 DT							4400			2700	2250	1940	

## J2850S



### Big Jon's Brother J2850S

The J2850S is an evolutionary development of the legendary Big Jon model. Its main components have been fully revamped and its boom geometry further developed, resulting in a significantly higher lifting capacity without compromising its light weight.

Allowable loads kg - outreach m											
	0	1	2	3	4	5	6	7	8	9	10
J 2850-83					8400	6380	5220	4420	3780	3280	
J 2850-91					8140	6180	5060	4320	3750	3250	2200
J 2850-97					7790	6220	5010	4230	3660	3190	2820

## J2640Z



### Foldable J2640Z

The J2640Z, folding into a compact space, is designed for trucks with an especially high cabin. Although the J2640Z is of compact size, its reach is among the best in its class. Its ingenious auxiliary cylinder solution enables a lifting capacity fully comparable to that of cranes with a straight boom.

Allowable loads kg - outreach m											
	0	1	2	3	4	5	6	7	8	9	10
J 2640 Z-82					6640	5280	4460	3820	3260	2950	
J 2640 Z-95 DT						5080	4260	3630	3080	2680	2130

# Cut-To-Length Cranes, Equipment

● = standard   ■ = extra   ▼ = optional

		J900S	J1080S	J1420S	J1140Z	J1320Z	J1440Z	J1620Z
Mounting position								
Behind the cab	A	▼	▼	●	▼	▼	▼	▼
At the rear of the truck	R	▼	▼	▼	▼			
Boom system type	S	●	●	●				
	Z				●	●	●	●
Control system	2 levers	●	▼	▼	▼	▼	▼	▼
	4 levers		▼	▼	▼	▼	▼	▼
Hydraulic system, one-pump-drive, fixed displacement pump		●	●	●	●	●	●	▼
Hydraulic system, two-pump-drive, fixed displacement pump		■	■	■	■	■	■	▼
LS-hydraulic system	mechanic		▼					
	electric		▼					
Automatic lifting of stabilizers into transport position		●	●					
Manual control of stabilizers from the ground		●	●	●	●	●	●	●
Mechanical control of stabilizers from the control position		■	■	■	●	■	■	■
Electric control of stabilizers from the control position		■	■	■	■	■	■	■
Stabilizer lifting angle 180 degrees	Powerlift	■	■	■	■	■	■	■
Stabilizer length alternatives (pcs)		3	3	1	3	1	1	1
Stabilizer extension piece		■	■	■	■	■	■	■
Separate stabilizers	ET370			▼		▼	▼	
	ET450							▼
	SY550							▼
	B5500					▼	▼	▼
Extra wide stabilizers, separate	B4820			▼		▼	▼	
Extra wide stabilizers	B4500				■			
	B4600		▼					
	B5200	■						
CE additional safety system								
Engine stop, Stop button	C1	■	■	■	■	■	■	■
With magnetic valves	C2	■	■	■	■	■	■	■
Tilting indicator, magnetic valves	C3	■	■				■	■
Motor stopper, cabin model, PV90 E	C6		■					
POL (Prevent Over Load)		■	■	■	■	■	■	■
Load holding valves	Oil Control			■	■	■	■	■
Crane damper			■					
Column hoses fitted with swivel joint		●	●	●	●	●	●	●
Adjustable seat height		●	●	●	●	●	●	●
Seat with heating		●	●	●	●	●	●	●
Weather guard		■	■	■	■	■	■	■
High seat	E	▼			▼	▼		●
	S		●		▼	▼	●	
	L	▼		●				
Side mounted control seat	on the right	■						
	on the left	■						
Cabin								
Mechanical control	MF		■					
Electrical control	E		■					
Spotlights		■	■	■	■	■	■	■
First boom cylinder protection		■	■	■	■	■	■	■
Log heel				■	■	■	■	■
Central lubrication			■	■				
Scale			■	■				
Standard colours	red	▼	▼	▼	▼	▼	▼	▼
	black	▼	▼	▼	▼	▼	▼	▼
RAL special colours		■	■	■	■	■	■	■
<b>Grapples</b>								
X43		■	■	■	■	■	■	■
X53		■	■	■	■	■	■	■

# Tree-Length Cranes, Equipment

		● = standard	■ = extra	▼ = optional		J1820S	J2490S	J2850S	J2640Z
Mounting position									
Behind the cab	A	●				●	●	●	●
Boom system type	S	●				●	●	●	
	Z								●
Control system	2 levers	▼				▼	▼	▼	▼
	4 levers	▼				▼	▼	▼	▼
Hydraulic system, one-pump-drive, fixed displacement pump		▼							
Hydraulic system, two-pump-drive, fixed displacement pump		▼				●	●	●	●
Manual control of stabilizers from the ground		●				●	●	●	●
Mechanical control of stabilizers from the control position		■				■	■	■	■
Electric control of stabilizers from the control position		■				■	■	■	■
Stabilizer lifting angle 180 degrees	Powerlift	■				■	■	■	■
Stabilizer extension piece		■				■	■	■	■
Separate stabilizers	ET450	▼				▼	▼	▼	▼
	SY550	▼				▼	▼	▼	▼
CE additional safety system									
Engine stop, Stop button	C1	■				■	■	■	■
With magnetic valves	C2	■				■	■	■	■
Tilting indicator, magnetic valves	C3					■	■	■	■
POL (Prevent Over Load)		■				■			■
Load holding valves	Oil Control	■				■	■	■	■
Crane damper							■		
Column hoses fitted with swivel joint		●				●	●	●	●
Adjustable seat height		●				●	●	●	●
Seat with heating		●				●	●	●	●
Weather guard		■				■	■	■	■
High seat	E	●				●	●	▼	
	L							▼	●
Spotlights		■				■	■	■	■
First boom cylinder protection		●				●	●	●	■
Second boom cylinder protection		●				●	●	●	●
Log heel		●				●	●	■	■
Pressure booster	Pressure Booster						■	■	■
Central lubrication		■				■	■	■	■
Standard colours	red	▼				▼	▼	▼	▼
	black	▼				▼	▼	▼	▼
RAL special colours		■				■	■	■	■
<b>Grapples</b>									
TX56								■	
TX56B		■				■	■		■
TX86B		■				■	■	■	

We reserve the right to make changes. Illustrations, drawings and data are not always in accordance with the latest version or standard model in production. The models in the pictures may present special equipment or colours.

*Cargotec improves the efficiency of cargo flows on land and at sea - wherever cargo is on the move. Cargotec's daughter brands, Hiab, Kalmar and MacGregor are recognised leaders in cargo and load handling solutions around the world. Cargotec's global network is positioned close to customers and offers extensive services that ensure the continuous, reliable and sustainable performance of equipment. [www.cargotec.com](http://www.cargotec.com)*



**SAWO A/S**  
Industrimarken 1  
DK-9530 Støvring  
tlf.: 7010 0766  
fax: 9837 3466  
**[www.sawo.dk](http://www.sawo.dk)**