



LOGLIFT

LOGLIFT 61Z



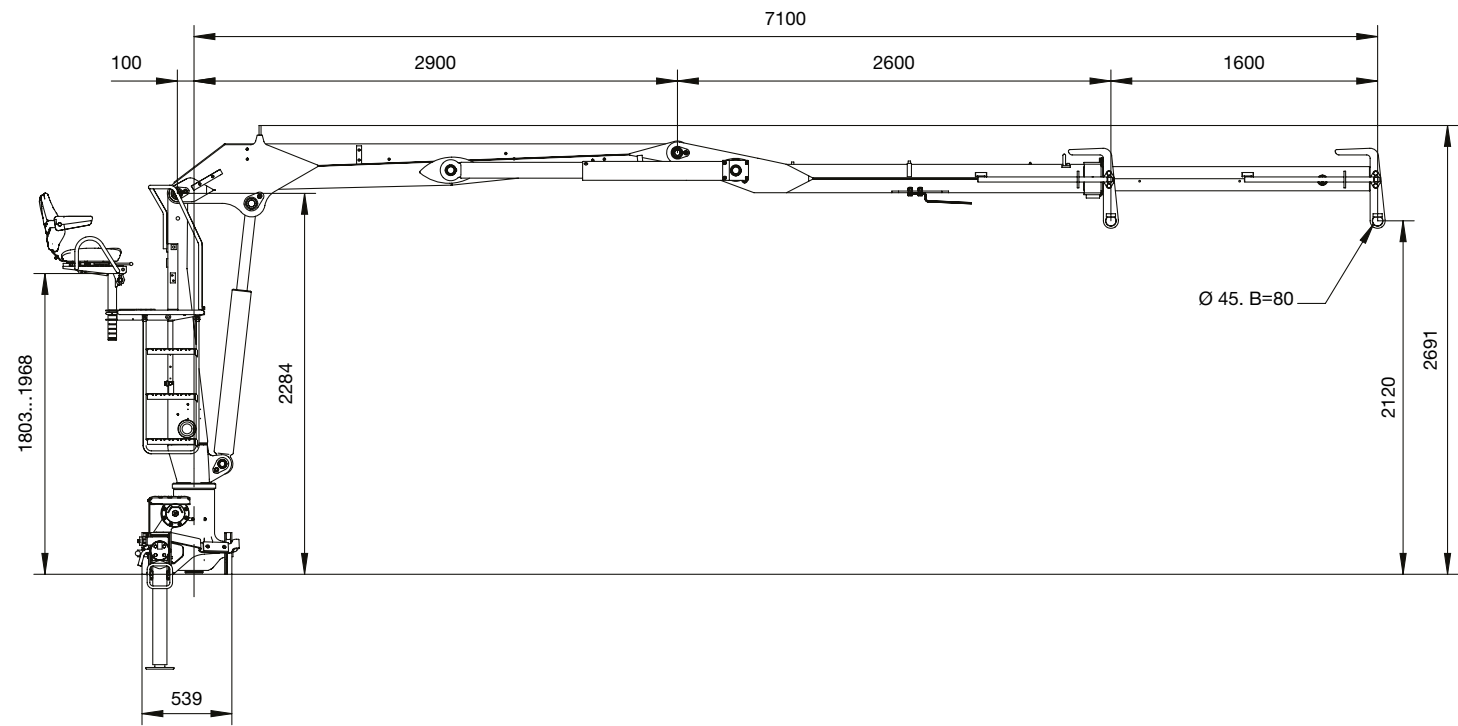
BASIC DATA

LOGLIFT 61Z BASIC DATA

Technical data		F61Z 71
Max. lifting capacity (kNm)		64
Hydraulic outreach* (m)		7.1
Number of extensions		1
Outreach - lifting capacity, standard (m - kg)		3.0 - 1640 4.0 - 1380 5.0 - 1220 6.0 - 1060 7.0 - 880
Slewing system		Single
Slewing angle (°)		415
Slewing torque, gross (kNm)		13.1
Max. working pressure (MPa)		22
Recommended oil flow – fixed pump (l/min), 1-pump		60
Recommended oil flow – fixed pump (l/min), 2-pump		2x50-60
Weight - High seat crane with standard stabilizer (kg)*		1360

*Weight with fixed pump system, oil weight included

Side view



For more information,
please visit us at www.hiab.com

BUILT TO PERFORM

Hiab is the world's leading provider of on-road load handling equipment. Customer satisfaction is the first priority for us. Hiab's product range includes HIAB loader cranes, JONSERED recycling and forestry cranes, LOGLIFT forestry cranes, MOFFETT truck mounted forklifts and MULTILIFT demountables, as well as DEL, WALTCO and ZEPRO tail lifts.

hiab.com

Hiab is part of Cargotec.

cargotec.com

Disclaimer. We reserve the right to make changes. Illustrations, drawings and data are not always in accordance with the latest version or standard model in production. The models in the pictures may present special equipment or colours.

BD-F61Z-EN-WW_190208