

JONSERED 1000SR

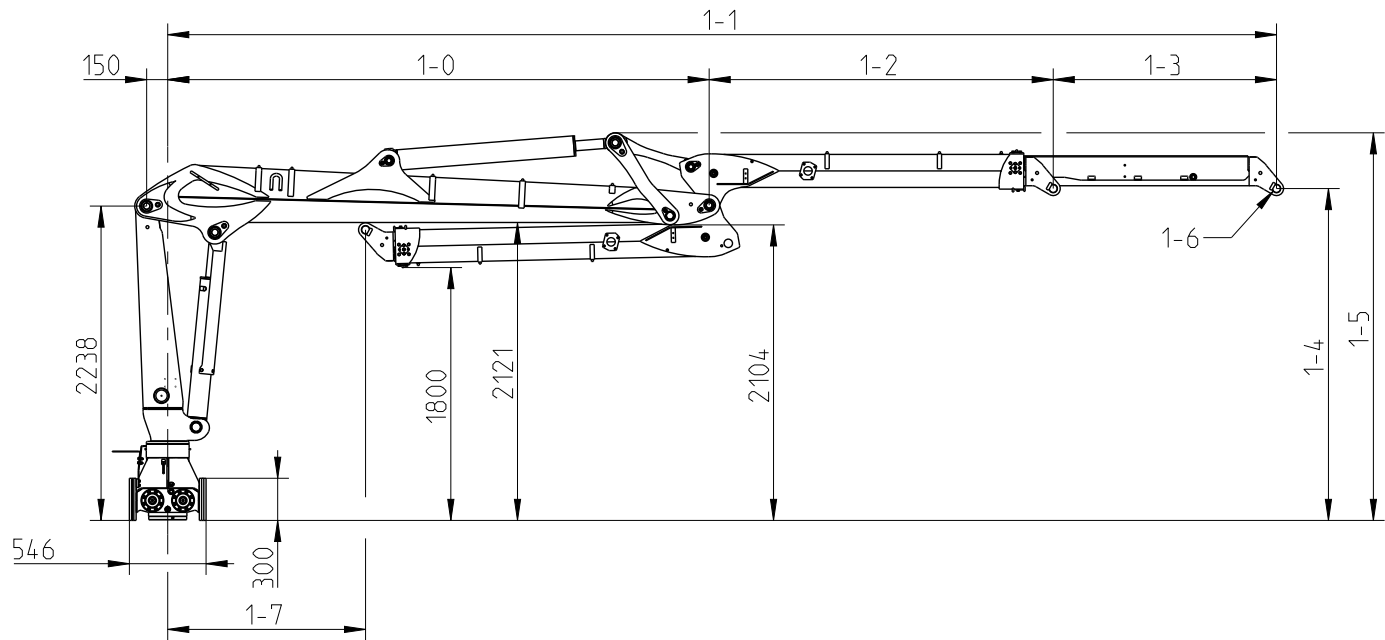


JONSERED 1000SR BASIC DATA

Technical data	J1000SR 79	J1000SR 96
Max lifting capacity, net (kNm)	102	95
Max outreach (m)	7.9	9.6
Number of extensions	1	2
Outreach / Lifting capacity (m/kg)	3.0 - 3250	3.0 - 2800
	4.0 - 2460	4.0 - 2300
	5.0 - 2020	5.0 - 1880
	6.0 - 1700	6.0 - 1580
	7.0 - 1440	7.0 - 1340
	7.9 - 1200	8.0 - 1160
	-	9.0 - 1020
	-	9.6 - 890
Slewing system	Double	
Slewing angle (°)	425	
Slewing torque, gross (kNm)	29.8	
Max. working pressure (MPa)	20.5	
Recommended oil flow – fixed pump (l/min), 1-pump	80	
Recommended oil flow – fixed pump (l/min), 2-pump	2 x 80	
Min. recommended oil flow – variable displacement pump (l/min)	160	
Weight (kg) *	1550	1695

* Weight of standard crane, oil weight included

Side view



Model	1-0	1-1 min	1-1 max	1-2	1-3	1-4	1-5	1-6	1-7
79	3855	6305	7895	2450	1590	2365	2761	Ø 40, B=184	1405
96	3855	6445	9595	2590	3150	2398	2761	Ø 40, B=184	1265

For more information,
please visit us at www.hiab.com



BUILT TO PERFORM

Hiab is the world's leading provider of on-road load handling equipment, intelligent services, smart and connected solutions. Hiab's class-leading load handling equipment includes HIAB, EFFER and ARGOS loader cranes, LOGLIFT and JONSERED forestry and recycling cranes, MOFFETT and PRINCETON truck mounted forklifts, MULTILIFT skiploaders and hooklifts, and tail lifts under the ZEPRO, DEL, and WALTCO brands.

As the industry pioneer and with a proud 75 year history, Hiab is committed to be the preferred partner and solution provider to its customers and shape the future of intelligent load handling.

www.hiab.com

Hiab is part of Cargotec Corporation.

www.cargotec.com

Disclaimer. We reserve the right to make changes. Illustrations, drawings and data are not always in accordance with the latest version or standard model in production. The models in the pictures may present special equipment or colours.

BD-J1000SR-EN-WW_200130

www.hiab.com



JONSERED